

# ALUMINIUM PROFILE POLISHING MACHINE



**7510 EH2**

## TECHNICAL DETAILS

7510 SERIES

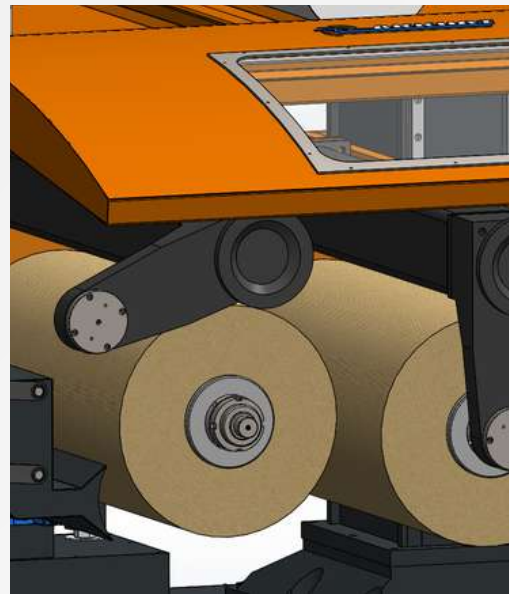
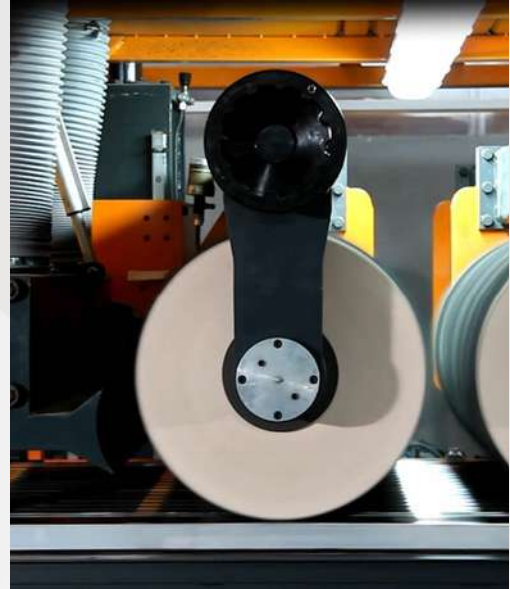
# BRUSHES

Two group of polishing brushes, each 1.000 mm length and driven 37 Kw Electrical Motor. You can use brush diameter up to 500 mm. You can set all brushes on the 80 mm diameter brush spindle in the workshop.

Set up in to machine is very easy and fast because of counter sliding bed. Brush rotating speed can be adjusted from 0 up to 2000 with equipment inverter system.

Each brush group precisely moving on separate vertically located 8 linear bearing through hydraulic cylinders. Brush groups have separate hydraulic cylinder system for fast upward and downward movement on the Aluminium. Due to this system, operator do not make any adjustment for each start and also this system eliminate time loosing and saving time.

This system also giving extraordinary working possibility for thin extrusion profile which eliminate brush contact to the working table. The hydraulic system power unit is total 1,5 Kw (2 Hp)

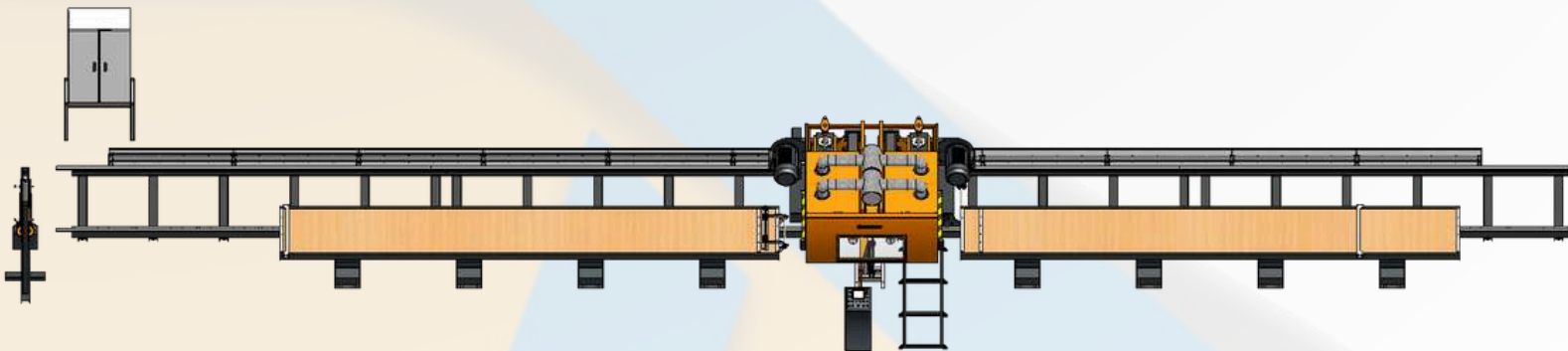


## HEAD SYSTEM

This machine has fixed table and movable polishing head.

Polishing head moving on special construction 24 meters length rail system which fixed on the floor.

Polishing head movement on the rail powered by 3 Kw Servo motor with gear box. Movement speed can be adjust up to 18 mt/min.



## FIXED TABLES

The machine has 2 fixed table, Table dimensions: 8.000 x 1.100 mm.

## CABIN & BALANCE

7510 SERIES



## MACHINE CABIN

The machine has special cabinet which fixed to Movable head and cover, machine, polishing brushes and relative air duct adapter. There is a functional door on the cabin which cover transparent polycarbonate window allows to check polishing operation. The air duct adapter's height (between brush and extrusion profile) is adjustable.

## BRUSH CORRECTION

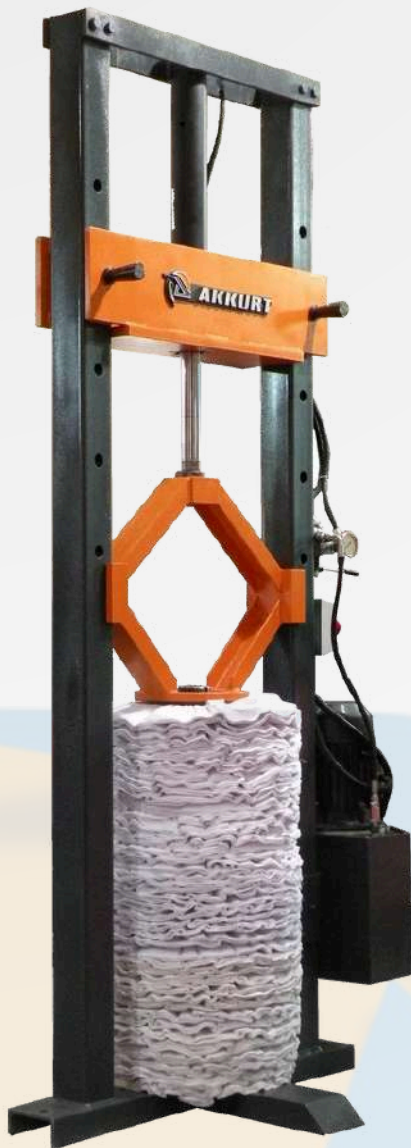
Brush groups works against vibration through vertically on horizontally assembled pressure axe column. During operation if brushes have a balance and surface problems the machine have balancing and brush surface correction system. You can use this system on the table when needed. This system is moving on the linear bearing by pneumatic cylinder.





OPTIONAL

7510 SERIES



## BRUSH ASSEMBLY PRES

This press assembles brushes into the brush sleeves easily. 2.2 Kw (3 Hp)  
Electrical motors and 9.000 Kg press capacity.

## BRUSH SLEEVES

If you want to speed up replacing brush groups we recommend this unit. This also useful when you to use different type brushes.

## OSCILLATION

It is possible to make up to 25 mm oscillation for brush groups through electric motor. This option can not be recommended for round extrusion profile, tube serially producer. Because of this is not standard item.

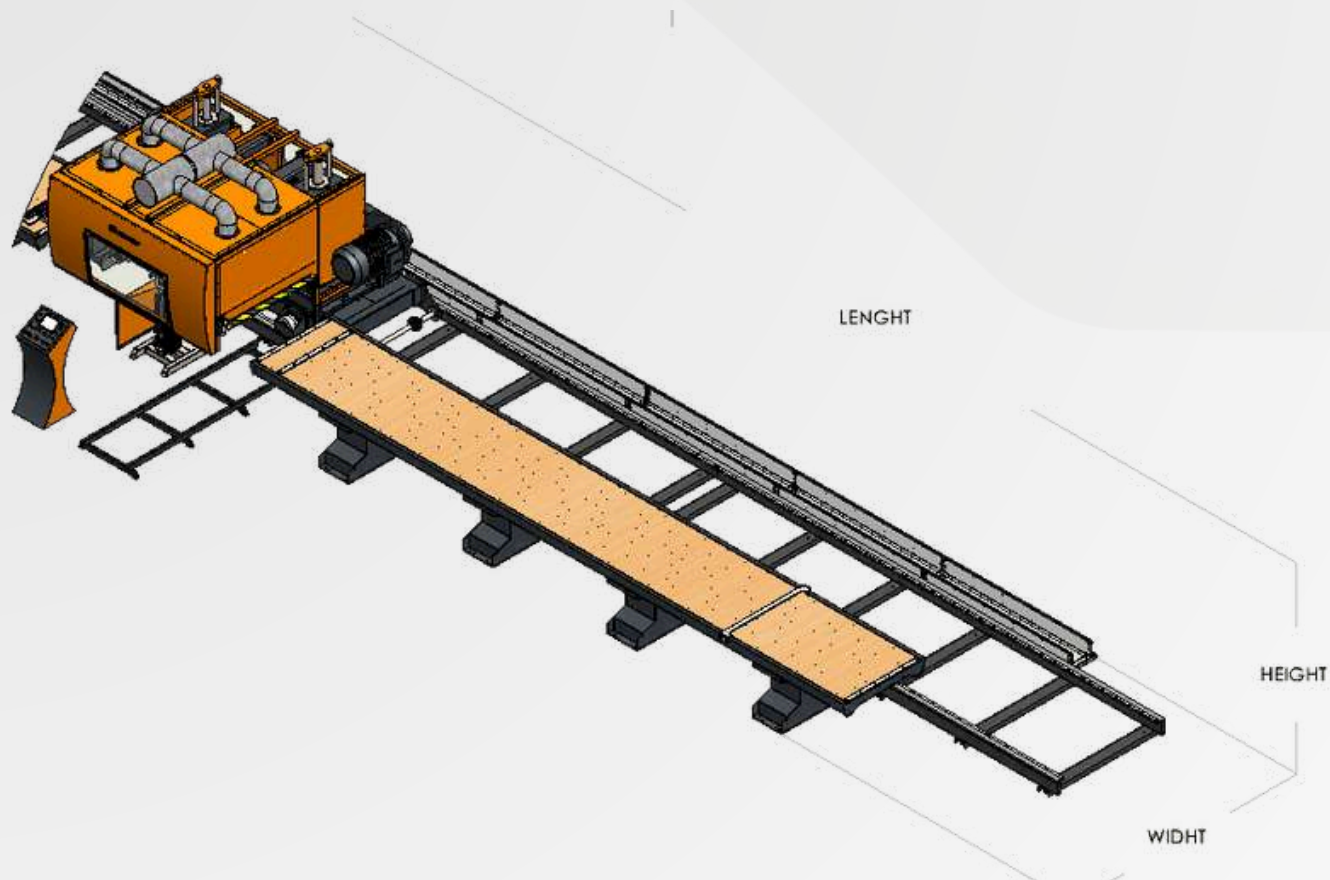
## SPRAYING

Polishing compound spraying system consist total 6 pcs (3 for each group) high pressure gun, 100 litres capacity polishing compound tank and special compound feeding pump 3,5 -4 bars.

This system spraying liquid polishing compound on the Extrusion profile directly. Some companies likes and using this system some companies not using. For this reason instead of recommendation we leave under customer decision.

WEIGHT & DIMENSIONS

7510 SERIES



Seri	Machine Installation Area			Power			Weight
	Widht	Lenght	Height	Volt	Phase	Total	
7x	3.100 mm	25.000 mm	2.300 mm	400	3	80 KW	10.750 KG

## PROFILE CAPACITY & BRUSH DIMENSIONS

### 7510 SERIES

Seri	Electric Motors				Brush Type		Max. Profile Dimensions		
	Brush	Servo	Hydraulic	Press	Dimension	Type	Widht	Lenght	Height
7x	2 x 37 kW 1500 d/d.	1 x 3 kW	1 x 1,5 kW 1500 d/d.	1 x 2,2 kW 1500 d/d.	İç: Ø180 Dış: Ø500	Patiska - Poplin	1000 mm	7.500 mm	



A mechanical body design optimized for high speed and rotation.



Linear motion capability. Minimal vibration.



Dust extraction unit inside the cabin.



Servo motor controlled, 0-23 m/min feed rate.



User-friendly interface with a 7" touch screen.



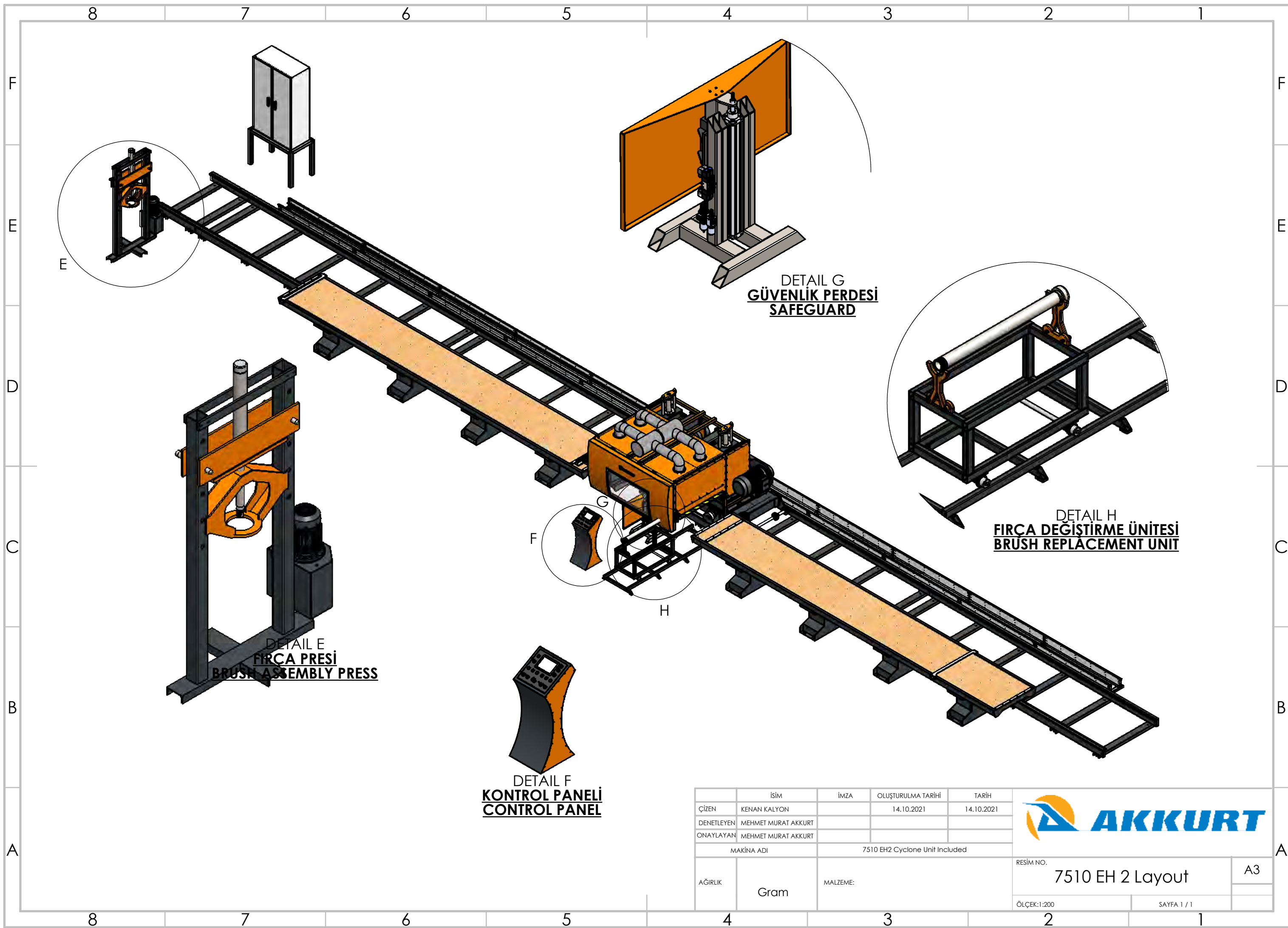
External operator panel.



Safety barriers.



37 kW PLC - inverter controlled brush motors.



	İSİM	İMZA	OLUŞTURULMA TARİHİ	TARİH
ÇİZEN	KENAN KALYON		14.10.2021	14.10.2021
DENETLEYEN	MEHMET MURAT AKKURT			
ONAYLAYAN	MEHMET MURAT AKKURT			
MAKİNA ADI		7510 EH2 Cyclone Unit Included		
AĞIRLIK	Gram	MALZEME:		

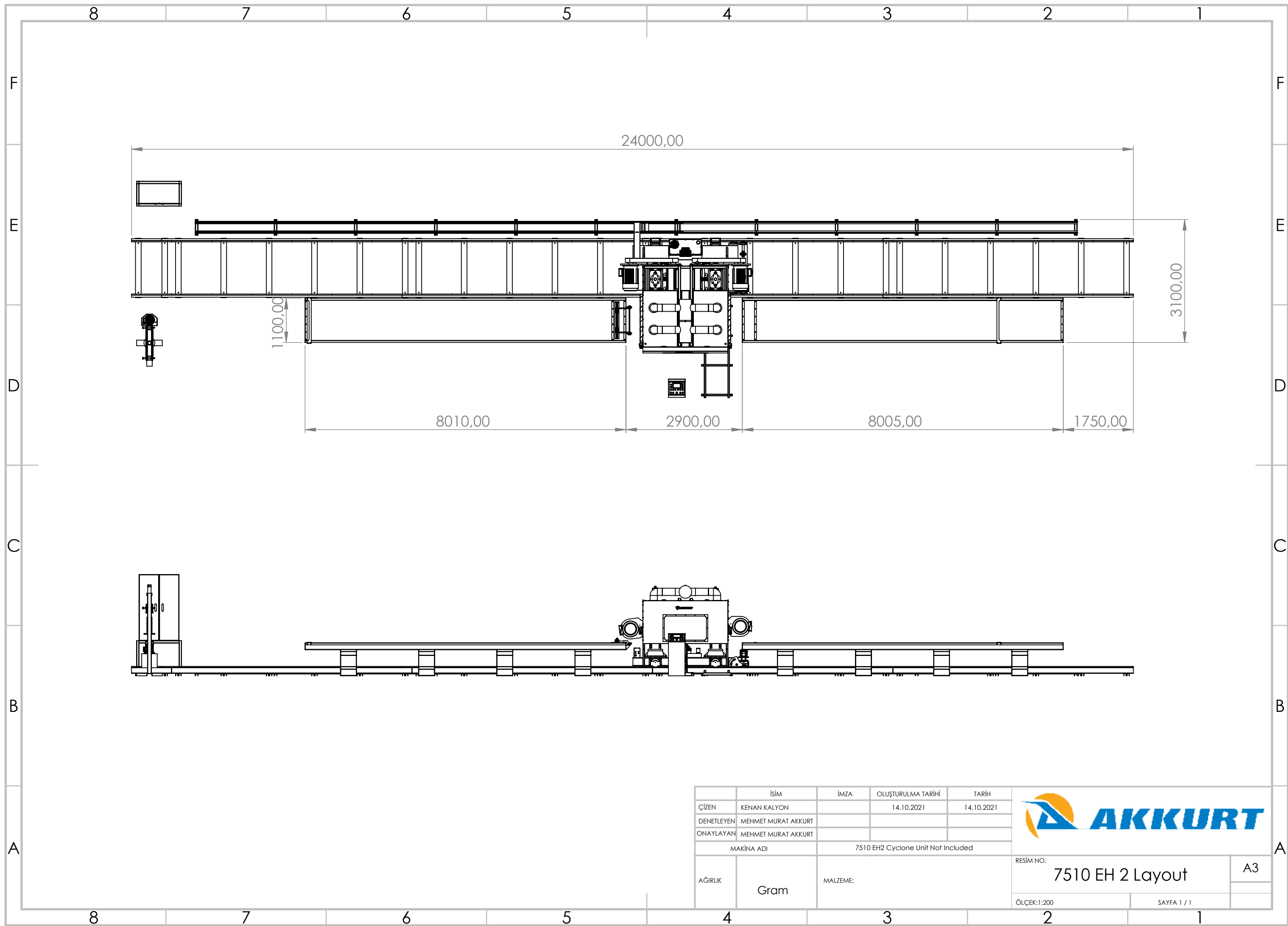
**AKKURT**


RESİM NO. 7510 EH 2 Layout

ÖLÇEK: 1:200

SAYFA 1 / 1

A3



	İSİM	İMZA	OLUŞTURULMA TARİHİ	TARİH		
ÇİZEN	KENAN KALYON		14.10.2021	14.10.2021		
DENETLEYEN	MEHMET MURAT AKKURT					
ONAYLAYAN	MEHMET MURAT AKKURT					
MAKİNA ADI		7510 EH2 Cyclone Unit Not Included			A	
AĞIRLIK	Gram	MALZEME:	RESİM NO.			A3
			7510 EH 2 Layout			
			ÖLÇEK:1:200	SAYFA 1 / 1		